



Kollective Browser-Based Peering Solution

Instantly Scale Live Video for Microsoft Teams and Stream

SOLUTION BRIEF

Video allows great leaders to deliver critical messages to the entire organization, regardless of their location. This creates a culture based on transparency, trust and inclusion, producing greater unity among employees. Microsoft's collaboration suite enables organizations to communicate and connect in ways never achieved before. Live video events in Microsoft Teams and Stream offer a seamless, easy to engage solution with no hurdles for your IT teams or employees. Kollective's browser-based peering solution scales these communications across your network, allowing you to achieve 100% delivery at 1% the bandwidth.

- **Deliver your message through high-quality video and a flawless user experience**
- **Securely reach every employee around the globe**
- **Effortlessly bring every employee onboard, with no hardware, agents or setup**
- **Leverage your existing communication and collaboration apps for greater engagement**

Seamless Integration

Reach your employees through the mediums they use for collaboration and communication today. Kollective seamlessly integrates with Microsoft Teams, Stream and Yammer, allowing you to deliver your video communications in minutes versus days and reach your entire organization.

Superior User Experience

The best technology solutions are those that go unnoticed by users. Kollective eliminates the technical barriers that create a frustrating user experience. With one click users will have a high quality, seamless video experience, where they can see and hear the goals and objectives of leadership.

Effortless On-Boarding

Kollective's innovative browser-based peering solution uses real time communications channels within the browser, which means there's virtually zero effort for your IT department to implement and deliver live video across your network. By partnering with Microsoft, Kollective ensures seamless execution and delivery of video, keeping enterprise employees engaged and boosting productivity in the modern workplace.

Global Scalability

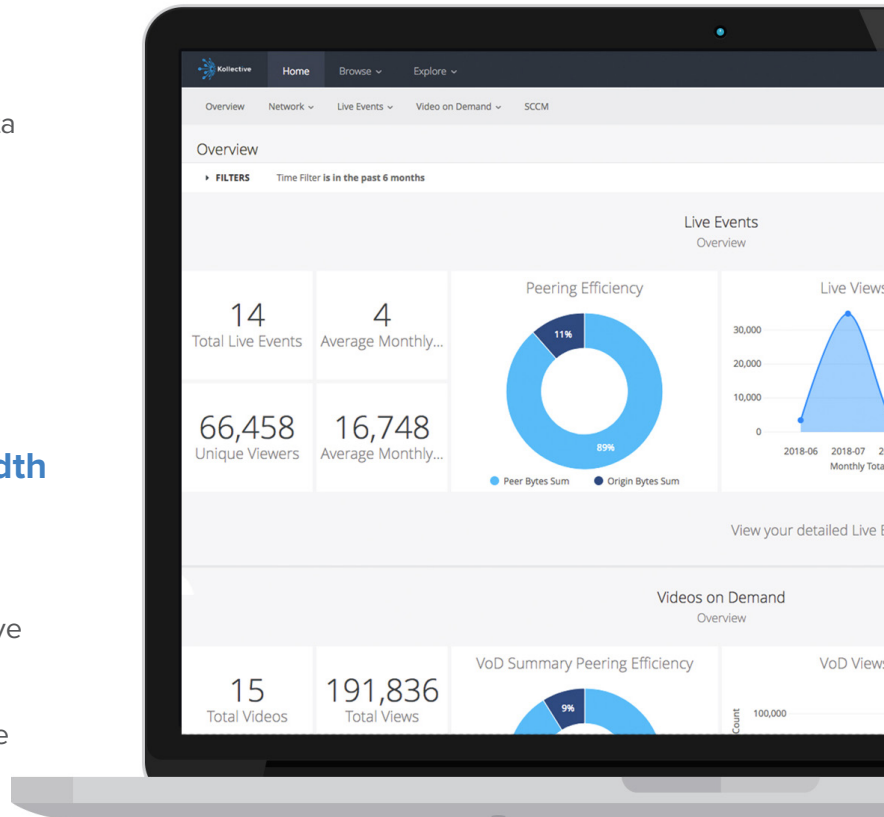
Kollective's solution is built upon the latest cloud technology and services. The flexible architecture leverages browser-based communications and cloud-based distribution, providing a customized solution that scales with the needs of your global organization.

Decision Based Analytics

Kollective IQ provides dashboards with real-time data and drill-down analytics to easily see metrics for live video within Microsoft Teams and Stream. Content owners learn how their video is performing and network admins see how videos are distributed to ensure a good end-user experience.

100% Video Delivery at 1% the Bandwidth

Kollective provides the same high-quality video and experience to everyone in your organization, regardless of where they are located. With Kollective you'll offset 99% of the bandwidth consumption, ensuring business critical operations continue while employees engage with your content.



KEY FEATURES

Instantly Stream Live Video

Deliver your high-quality video and reach your entire organization regardless of location.

Simple

Frictionless experience for your IT teams and end users, making it easy to deliver and engage with the content.

Real-Time Monitoring

Gain real-time insights on the performance of your network, your content and the engagement of your audiences around the world.

Secure

Delivery your message and content in a highly secure environment across the globe.